



One Time Request-
WUDU Station and Fire Egress
Design Plan

A.D. BRUCE RELIGION CENTER

FY 25-26



WUDU Station and Fire Egress Design Plan – AD Bruce Religion Center

This request is part two of a renovation request for the 2nd floor Wudu in A.D. Bruce Religion Center in collaboration with UH Student Government Association. The request is for a UH Facilities and Planning Design Plan. This design plan will provide all the necessary measurements, building materials and costs associated for construction project completion.

The design plan request is a detailed scope of work for the construction project. The design plan will detail out all the elements required for the completion of the construction project. The once the design plan is completed, they will be able to provide the accurate version of costs for the construction project.

The facility assessment did determine that a Fire Egress walls needed to be added to the East stair well as it was not within Fire Marshall code. While this was not a part of the original project, it is a mandatory piece that must be included for completion as a part of the overall project.

As a part of the completed External Review which was conducted in late Fall of 2020. The committee provided several recommendations regarding the need for additional funds.

- This unit requires updated expectations around facility needs and realistic fundraising goals. Existing revenue streams, including wedding revenue, will never be enough to support the department's operation and/or facility needs. This iconic facility requires an infusion of significant capital.

After the completion of the Feasibility Study and Assessment a 2-part scope of work was determined. (supporting documents available)

Both scopes of work listed are a part of the post project design construction project.

Estimate Costs	\$115,000.00
6% Admin	\$6,900.00
TOTAL	\$121,900.00

Work Order #: WO104061

Client Information: Andre Adams/Director (Religion Center); ajadams6@Central.UH.EDU;
713-743-9297

Planning Facilities Planner Information: Angel Latchley; alatchle@central.uh.edu;
713-743-9347

Total Project Cost: TBD in Design Phase

Timeline Expectations from Client: Immediate

PFA Execution Date: TBD

Project Cost Center: TBD

I. Justification: The request was made for the need to reconfigure the 2nd Floor Restroom so that it can accommodate more WUDU Stations. Also, stair 3 in section 130 is in violation of fire egress and need to be brought up to code.

II. Scope of Work for Fire Egress Violation:

1. Add Wall at the corner of Hallway 100A and Stair 130.
2. Close in door to Room 101
3. Possible Relocation of Fire Equipment
4. Reconfigure Room 101, 103 and 103 A to accommodate new Entrance
5. Add wall to the corner of Hallway 200 and Stair 230
6. Close in door to Room 201 (Door not shown in Plan, but confirmed on site)

Scope of Work for WUDU Station:

7. Completely Demo Areas 210, 212, 212A, 212B
8. Reconfigure Areas 210, 212, 212A, 212B to include restroom area and multiple private WUDU stations (exact number to be determined in design)
9. Relocate janitor closet (currently 210) to Room 207. This should include tiling, mop service sink and the associated plumbing, drains, and shelving need for the space to function effectively.

IV. Supplemental Information

1st Floor Fire Egress:

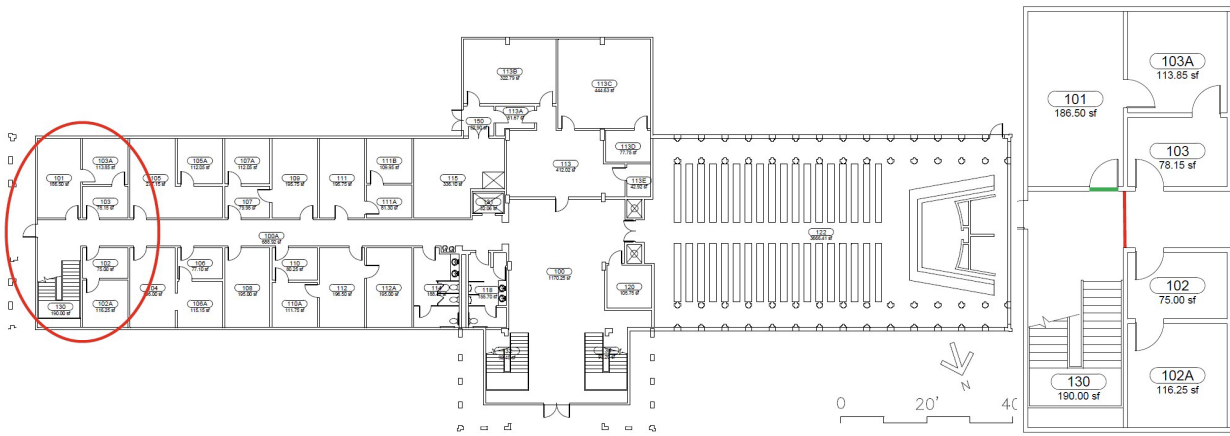


Figure 1: Egress Location, red lines indicates the new wall location, green line indicates door to be closed in.

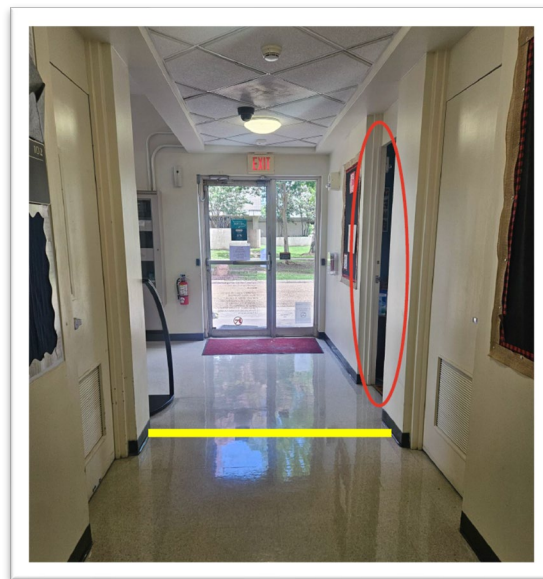


Figure 2: Images of Egress Location; Yellow line indicates wall location, Red circle indicates wall door to be closed in.

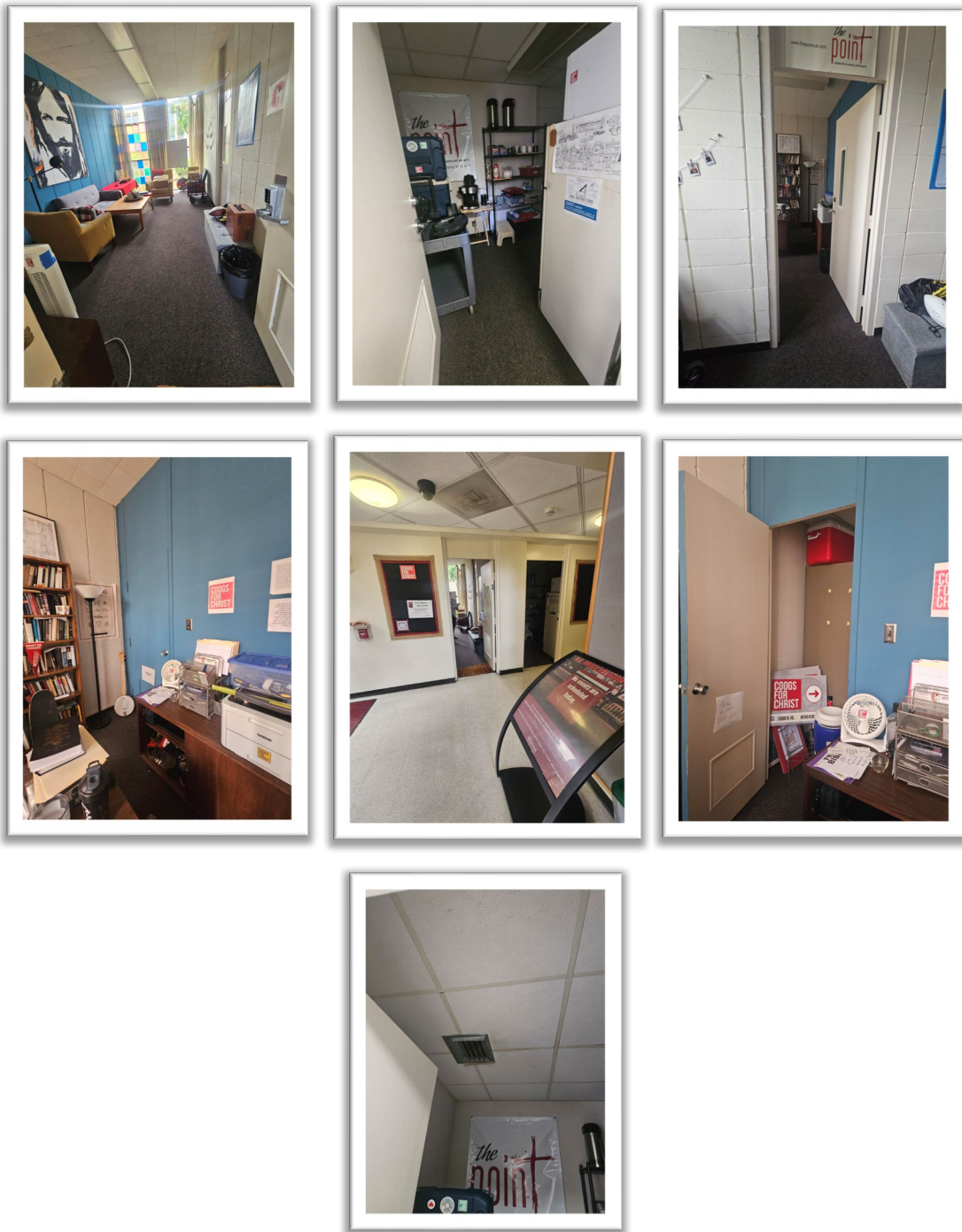


Figure 3: Images and Details of office areas effected by door closure. Design will be done to determine which doors will be closed in and moved.

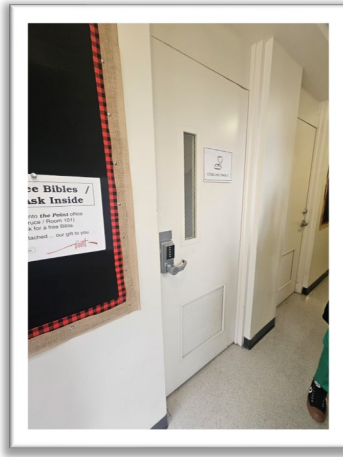


Figure 4: Image of Door to be closed in.

2nd Floor Fire Egress:

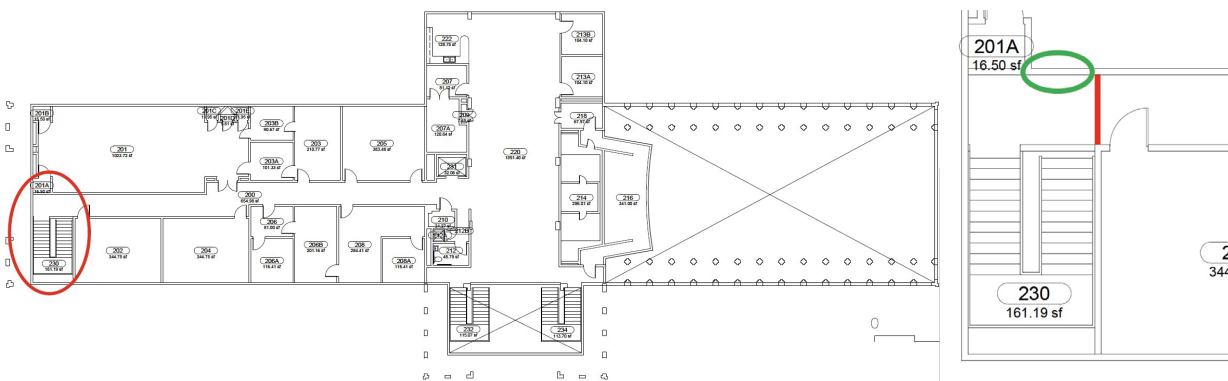
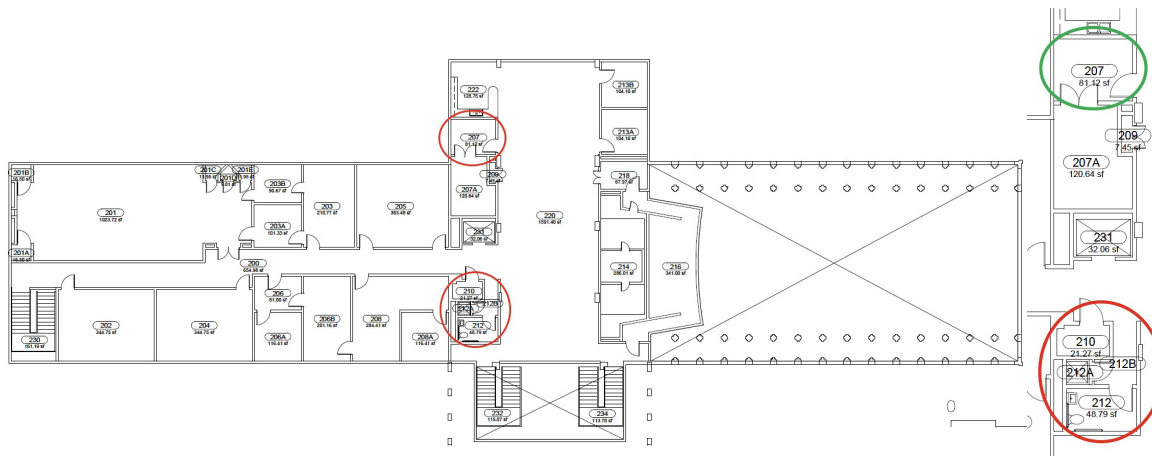


Figure 5: Egress Location; red lines indicates the new wall location, green circle indicates door to be closed in (Not pictured in Floor Plan)



Figure 6: Images of Egress Location; Yellow line indicates location of new wall, yellow arrow indicates door to be closed in (Not picture in floor plan).

2nd Floor WUDU Station:



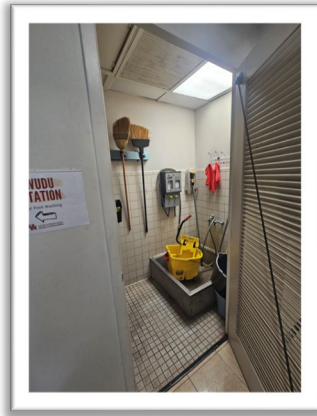


Figure 10: Images of Existing Mop Closet



Figure 11: Images and details of New Mop Closet Location

III. Notes

- 1) Construction Cost Dependent on Design and Cost Estimates During Design Phase

IV. Funding Information

- 1) **Total Design Cost - \$115,000**